

Font Choices

INITIALS, MONOGRAMS, NAMES & PHRASES

All fonts on this page can be used for initials, monograms, names and even phrases

Amienne

Aa Bb Cc Dd Ee Ff Gg Hh Ii Jj Kk Ll Mm Nn Oo Pp Qq Rr
Ss Tt Uu Vv Ww Xx Yy Zz

Lucida

Aa Bb Cc Dd Ee Ff Gg Hh Ii Jj Kk Ll Mm Nn Oo
Pp Qq Rr Ss Tt Uu Vv Ww Xx Yy Zz

Times New Roman

Aa Bb Cc Dd Ee Ff Gg Hh Ii Jj Kk Ll Mm Nn Oo Pp
Qq Rr Ss Tt Uu Vv Ww Xx Yy Zz

Arial

Aa Bb Cc Dd Ee Ff Gg Hh Ii Jj Kk Ll Mm Nn Oo Pp
Qq Rr Ss Tt Uu Vv Ww Xx Yy Zz

French Script

Aa Bb Cc Dd Ee Ff Gg Hh Ii Jj Kk Ll Mm Nn Oo
Pp Qq Rr Ss Tt Uu Vv Ww Xx Yy Zz

Greyhound Script

Aa Bb Cc Dd Ee Ff Gg Hh Ii Jj Kk Ll Mm Nn Oo Pp
Qq Rr Ss Tt Uu Vv Ww Xx Yy Zz

Monogram Etiquette

General Monogram Etiquette (Be sure to identify if personalization is same size initials or classic monogram. Letters are carved in the order they are presented).

ENTER LETTERS IN THE ORDER YOU WANT THEM CARVED

For HER SINGLE: Sarah Elizabeth Taylor

- Initials Same Size: { first, middle, last } SET
- Classic Monogram: { first, last, middle } STE
- Single Initial { last } T

For HIM: David Michael Johnson

- Initials Same Size: { first, middle, last } DMJ
- Classic Monogram: { first, last, middle } DJM
- Single Initial { last } J

For HER MARRIED: HYPHANATES LAST NAME:

Sarah Elizabeth Taylor marries David Michael Johnson

- Classic Monogram: { wife's first, married last, husband's first } SJD
- Single Initial { married last } J

For HER MARRIED: KEEPS MAIDEN NAME: Sarah Taylor Johnson

- Initials Same Size: { first, maiden, last } STJ
- Classic Monogram: { first, married last, maiden } SJT
- Single Initial { married last } T

For THEM SAME-SEX MARRIED COUPLE:

Henry Jonathan Smith and Jacob David Kellers

- Initials Same Size: { both men's last } SK
- Single Initial: { both men's first } H+J
- Single Initial { both men's last } SIK

For THEM SAME-SEX MARRIED COUPLE:

Gayle Michelle Hendrix and Kelly Ann Stevens

- Initials Same Size: { both women's last } HS
- Single Initial: { both women's first } G+K
- Single Initial { both women's last } HIS

INITIALS ONLY Font Choices

All fonts are suitable for INITIALS.
The below extra-special fonts are perfect for showcasing single initials.

Flourish Single Initial

A B C D E F G H I J K L M
N O P Q R S T U V W X Y Z

Circle Single Initial

A B C D E F G H I J K L M
N O P Q R S T U V W X Y Z

Double Diamond Single Initial

·A· ·B· ·C· ·D· ·E· ·F· ·G· ·H· ·I· ·J·
·K· ·L· ·M· ·N· ·O· ·P· ·Q· ·R· ·S· ·T·
·U· ·V· ·W· ·X· ·Y· ·Z·

Square Single Initial

A B C D E F G H I J K L
M N O P Q R S T U V W X
Y Z

INITIAL & MONOGRAM Font Choices

Vine

AA BB CC DD EE FF GG HH II JJ
KK LL MM NN OO PP QQ RR SS TT
UU VV WW XX YY ZZ

Roman

AAA BBB CCC DDD EEE FFF GGG HHH III JJJ
KKK LLL MMM NNN OOO PPP QQQ RRR SSS TTT
UUU VVV WWW XXX YYY ZZZ

Roselyn

AAA BBB CCC DDD EEE FFF GGG HHH III JJJ KKK LLL MMM
NNN OOO PPP QQQ RRR SSS TTT UUU VVV WWW XXX YYY ZZZ

Times New Roman

A A B B C C D D E E F F G G H H I I J J K K L L M M N N
O O P P Q Q R R S S T T U U V V W W X X Y Y Z Z

Arial

A A B B C C D D E E F F G G H H I I J J K K L L M M N N
O O P P Q Q R R S S T T U U V V W W X X Y Y Z Z

INITIAL & MONOGRAM Font Choices

Lucida

A A A B B B C C C D D D E E E F F F G G G H H H I I I J J J K K K L L L M M M
N N N O O O P P P Q Q Q R R R S S S T T T U U U V V V W W W X X X y Y y z Z z

Amienne

A A A B B B C C C D D D E E E F F F G G G H H H I I I J J J K K K L L L M M M N N N O O O
P P P Q Q Q R R R S S S T T T U U U V V V W W W X X X y Y y z Z z

Greyhound Script

A A A B B B C C C D D D E E E F F F G G G H H H I I I J J J K K K L L L M M M N N N
O O O P P P Q Q Q R R R S S S T T T U U U V V V W W W X X X y Y y z Z z

French Script

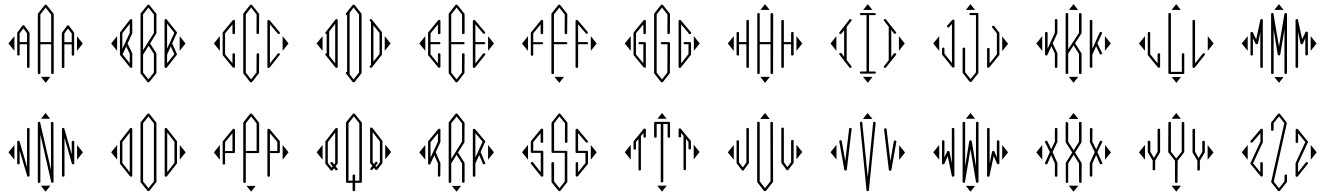
A A A B B B C C C D D D E E E F F F G G G H H H I I I J J J K K K L L L
M M M N N N O O O P P P Q Q Q R R R S S S T T T U U U V V V W W W X X X y Y y
z Z z

Circle

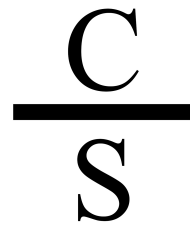
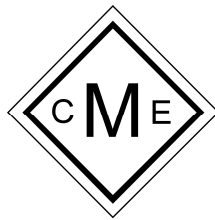
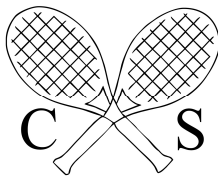


INITIAL & MONOGRAM Font Choices

Diamond



Other Monogram Designs



Introducing a fun new way to Monogram!

Fonts available:

Amienne, Arial, French Script, Greyhound Script, Lucida, Roman, Roselyn, Times New Roman, Vine

Anchor Monogram

Tennis Monogram

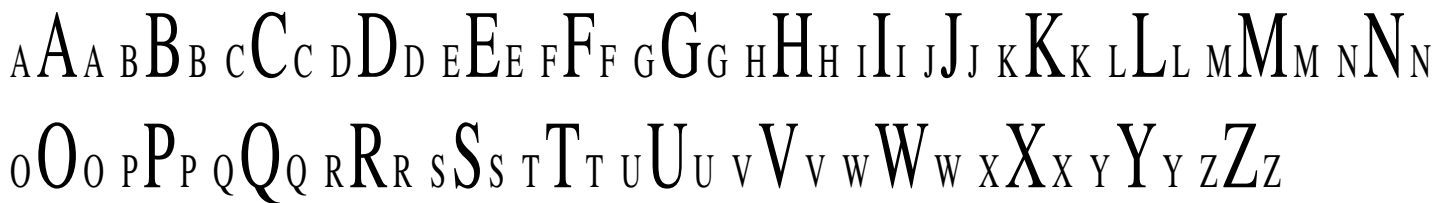
Diamond Monogram

H Divide Mono

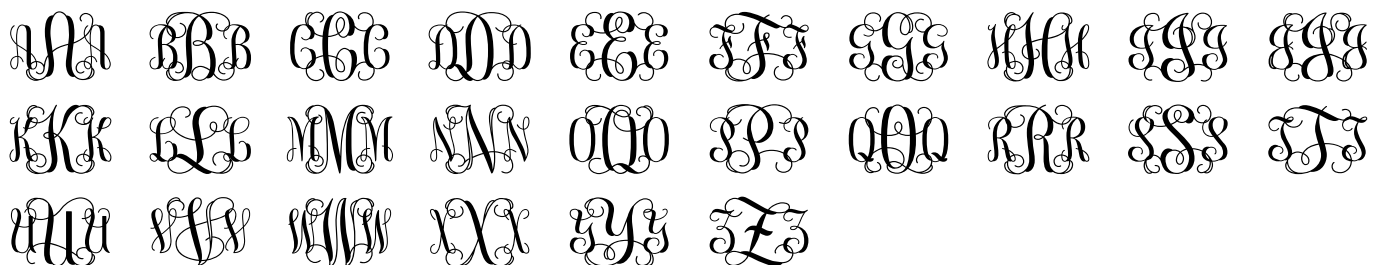
V Divide Mono

HOT STAMP EMBOSSING Font Choices

Times New Roman



Vine



Two Initials Ampersand

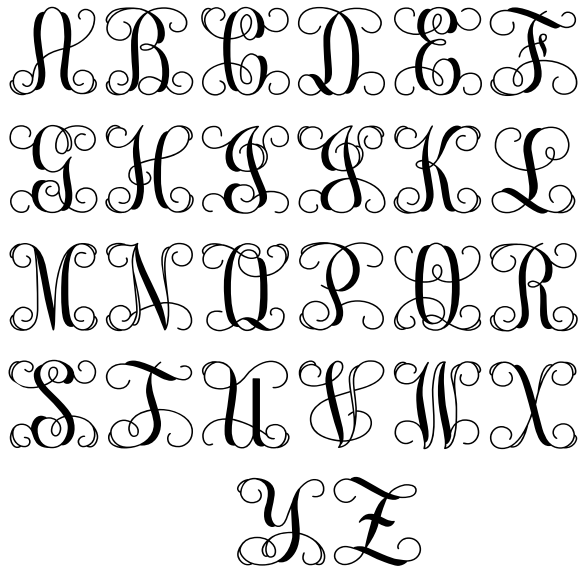
Consider adding the “&”

Argentium Sterling Silver Font Choices

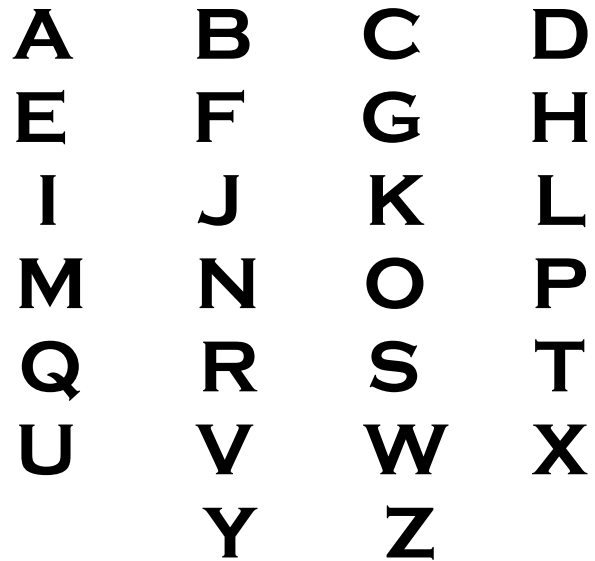
EACH pendant is handcrafted and nuances will occur. CS Artisan reserves artistic right to deem single or split-chain placement based on character combination.

If your last name (the largest in a monogram) is H, K, M, N, U, V, W, X, or Y chances are you will receive a split-chain. Special requests will be honored whenever possible.

VINE UPPERCASE FONT

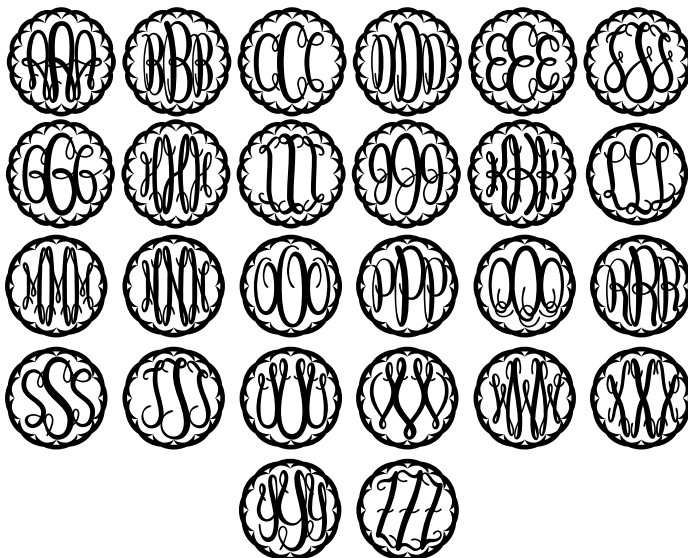


BLOCK UPPERCASE FONT



Personalized Acrylic Font Choices

KEEPSAKE SCRIPT



CIRCLE FONT

